



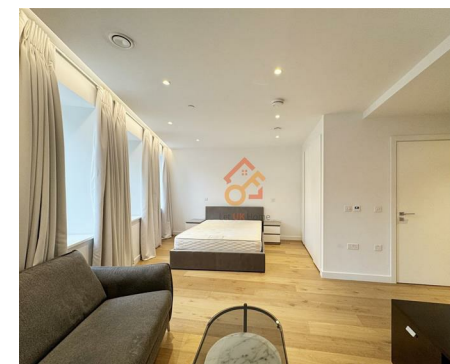
Let **UK** Home

1 Bedrooms

Flat - Studio

Located in London

£3,000 Per Month



info@letukhome.co.uk

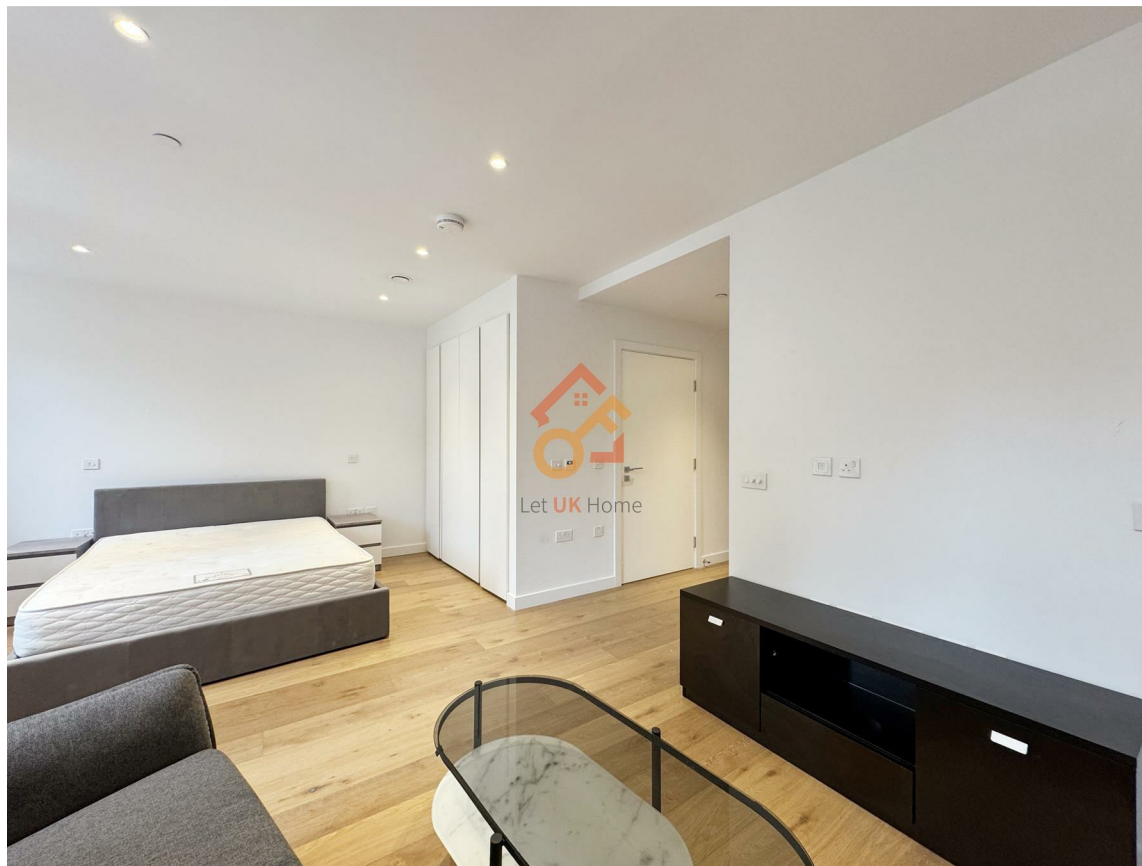
<https://www.letukhome.co.uk/>

01795 358 886



8 Mount Pleasant London

WC1X 0BU



Let UK Home are excited to offer this contemporary studio flat in the heart of Truro House, part of the prestigious Postmark development, renowned for its exceptional amenities and vibrant community atmosphere, situated at 8 Mount Pleasant in the heart of London.

This property features a well-appointed reception room that provides a welcoming space for relaxation or entertaining guests. The bathroom is designed with modern fixtures, ensuring comfort and style. The house is ideal for individuals or couples seeking a stylish urban retreat. A virtual viewing is provided.

Residents of Truro House will enjoy access to a range of outstanding amenities, including a swimming pool, a fully equipped gym, and a cinema, a spa and etc., making it easy to unwind and enjoy leisure time without leaving the comfort of the development. The concierge service adds an extra layer of convenience, ensuring that all your needs are met at any time of day.

The location is particularly advantageous for students and professionals alike, with prestigious universities such as the London School of Economics (LSE), University College London (UCL) and Central Saint Martins (CSM) just a short walk away. Additionally, the property is surrounded by multiple tube stations, providing excellent transport links to the rest of the city.

In summary, this modern house at 8 Mount Pleasant is an exceptional opportunity for those looking to embrace London living with style and ease. With its prime location, luxurious amenities, and contemporary design, it is a property not to be missed.

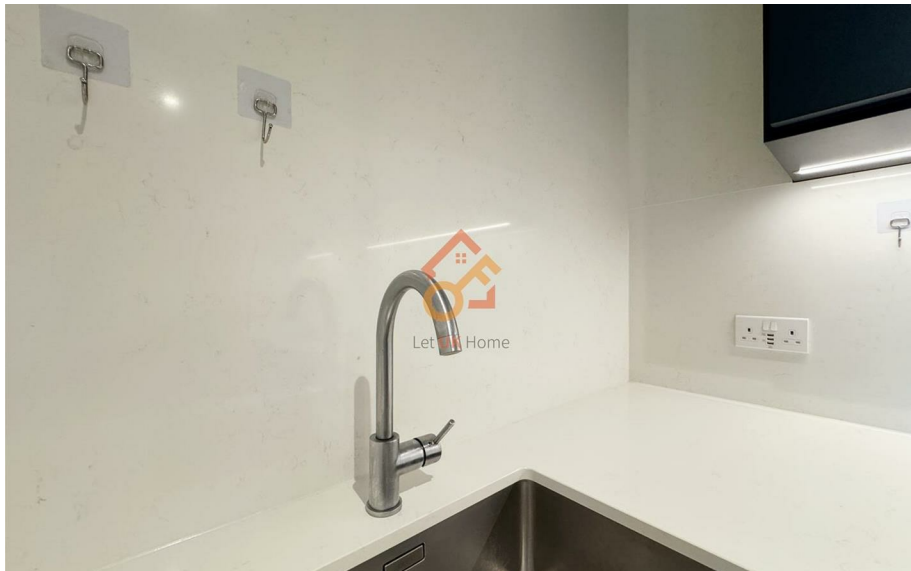
8 Mount Pleasant London

£3,000 Per Month

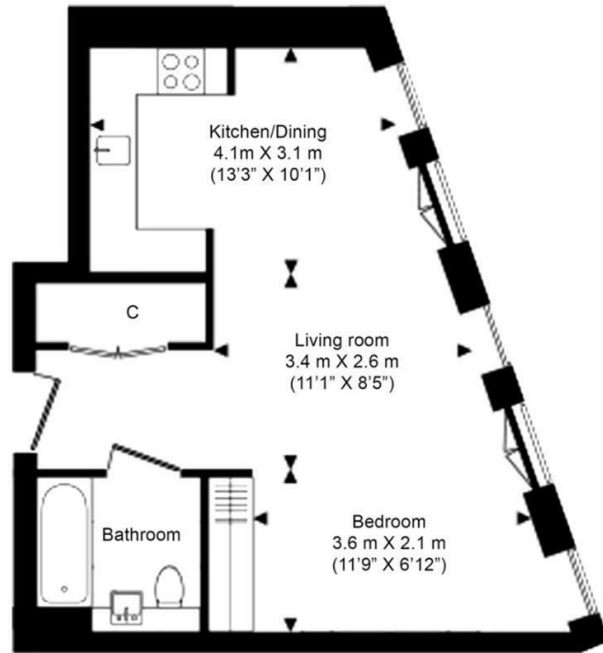


- Ground Floor
- 24h Security
- The Gym
- Sauna & Steam Room
- Virtual Viewing Available

- Concierge Service
- Swimming Pool & The Spa
- Cinema & Game Room
- Treatment Room
- EPC Rating: B



Ground Floor
Total Gross Internal Area
 42.0 Sq/m - 450 Sq/ft



Floor Plan measurements are approximate and are for illustrative purposes only. While we do not doubt the floor plans accuracy, we make no guarantee, warranty or representation as to the accuracy and completeness of the floor plan.



Let **UK** Home

3F 2 Eastbourne Terrace
 Paddington
 London
 W2 6LG

01795 358 886

info@letukhome.co.uk

Council Tax Band: E

Local Authority:

Agents Note: Whilst every care has been taken to prepare these particulars, they are for guidance purposes only. All measurements are approximate and are for general guidance purposes only and whilst every care has been taken to ensure their accuracy, they should not be relied upon and potential buyers/tenants are advised to recheck the measurements.

Energy Efficiency Rating		Current	Potential
Very energy efficient - lower running costs			
(92 plus) A			
(81-91) B			
(69-80) C		82	82
(55-68) D			
(39-54) E			
(21-38) F			
(1-20) G			
Not energy efficient - higher running costs			
England & Wales	EU Directive 2002/91/EC		

<https://www.letukhome.co.uk/>